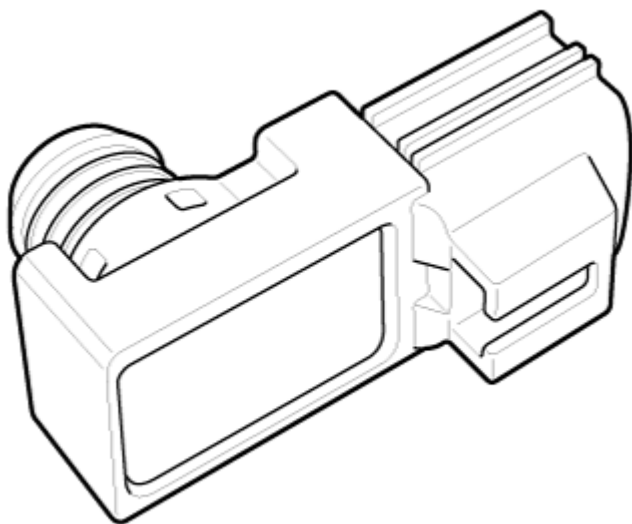


Please rate this document after reviewing at the bottom of this page.

DESCRIPTION

In order to ensure adequate brake power assistance in every situation, the brake booster is equipped with a partial vacuum sensor. The brake booster vacuum pressure sensor is located beside the brake booster.



*** Thanks for your cooperation for the more quality. Please surely rate this document before closing.**